

# Tetsworth Newsletter



Supported by Tetsworth Trust

Issue 102 February 2012

## St Giles Church

Not much news to write this month for Saint Giles as, at this point not much has happened. So far we have had only two services in 2012. Jeneva reminded us about our baptism and Heather and the congregation made paper aeroplanes to remind each other about the exciting things we know about Jesus. Lots to look forward to however and dates for your diaries.

Feb. 19<sup>th</sup> Sunday before Lent - Come and join us making pancakes and decide what you will give up for lent.

Mar 18<sup>th</sup> Mothering Sunday - On this special day we will be making posies and decorating a cake for our mothers.

24<sup>th</sup> March Church and Church Yard Spring Clean - We would love to see lots of volunteers to join us to spruce up the church and church yard. Please come from 10-00a.m. onwards and if possible bring tools to do the job you would like to do. Tea, coffee, squash and biscuits provided.

July 8<sup>th</sup> "Discovery Sunday" Watch this space!!

## Saint Giles Church Yard.

The PCC would appreciate your help in the care of the church yard. Please could you not allow your dog to foul the church yard. This is upsetting for those trying to take care of this space and it is also not healthy

for the children from John Watson post 16 class who come to help in the care of the church and the church yard. They have recently cleared all the plastic from the compost heap. Please put all non-compostable items in the bin. Dead flowers and grass cuttings only on the compost heap.

Thank you

## Bulk Buying of Heating Oil

Tetsworth Parish Council has been contacted by the charity organisation Oxfordshire Rural Community Council, with a view to setting up a group in our village to purchase heating oil in bulk.

Over the course of the year you can purchase as much or as little oil as you require and the average discount at the moment is 5p per litre on an order of 500 litres or more. The cost per household is £20 per year to join and on a delivery of 1000 litres you could save as much as £50.

If you are interested in joining contact Paul Margan 01844 281404 or 208655 alternatively email paulrobertmargan@yahoo.com there are also details on their website [www.oxonrcc.org.uk](http://www.oxonrcc.org.uk)

## Tetsworth Primary School

Well, what a great start to the New Year! We had such a lot of fun at the performance of Aladdin in Milton Keynes and lunch in Pizza Hut and all the children were very well-behaved and made us proud. To see everyone enjoying themselves so much makes

the effort of fundraising so worthwhile, so thank you again to the TPSA and Julie Eggleton for giving us these opportunities. The children are now busily preparing their own version of Aladdin which they will perform in March. The TPSA have also kindly funded a dance workshop to be held at school in which all the children will be involved in, learning dances for the school production and dance festival.

We are now looking forward to the Chinese New Year so that we can enjoy sharing a selection of dishes from the Dragon Inn, Thame. We look forward to seeing how many of the children will be able to manage the chopsticks?!

We have had a busy start to the new term. As well as continuing to practise for our performance at the O2 in March, we are now starting to learn the 'sign to sing' song for the 2012 record attempt. Last year we made it on to BBC Radio Oxford but this year we are joining with several thousands of other school children at the Guttman Centre, Aylesbury and so hopefully will get a mention on local TV!

## John Hampden & Tetsworth Primary Schools Federation

We currently have a vacancy for a Community Governor on the Federations Governing Body if you or anyone else you know may be interested please contact me on 0781 738 1899

## R Mead

## Skip Hire

01844 279403  
07899 672336

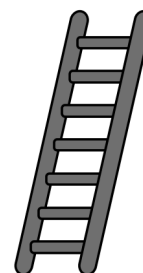
## D.K.R

 Cleaning Services

## Window Cleaner

Regularly in Tetsworth  
Fully Insured  
Established 25 years

01865 310272



Next Deadline is 21st of the month

Articles and letters to 3 Cygnet Close, Tetsworth or e mail [tetsworthnews@aol.com](mailto:tetsworthnews@aol.com)

# Computer Repairs



Hardware failure . Upgrades . Software problems  
Training . New equipment set up . Full diagnostics  
Anti-virus . Spyware problems

Contact David: 07966 168401/01844 351364

Has your oil boiler been  
serviced recently???

NOW WORKING INDEPENDENTLY

**MICK HOBDELL  
PLUMBING AND HEATING**

Oil boiler and Aga services,  
repairs and general plumbing

Phone Tetsworth 01844 281521  
Mobile 07554 426113

or [sibhagat@hotmail.com](mailto:sibhagat@hotmail.com)

Sarah Bhagat

Vice-Chair Governors - John Hampden & Tetsworth  
Primary Schools Federation

## ROGER BELSON

A Memorial service will be held for Roger Belson on  
Wednesday 21 March 2012 at 3pm

The Guards Chapel, Wellington Barracks, Birdcage  
Walk, LONDON SW1E 6HQ

All welcome, wheelchair access.

We are hoping to arrange some transport from Watlington. If you would like more information about his, please either leave your name and email address at the Post Office, Watlington or contact one of us by 10<sup>th</sup> February. Sarah Pullen [sarah@skpsolutions.co.uk](mailto:sarah@skpsolutions.co.uk) 0797 004 1523 or Angie Paterson [angie.paterson@btinternet.com](mailto:angie.paterson@btinternet.com) 01491

Dear Editor

Sadly the village hall committee have had to cancel the Farmers Market due to lack of support from the village.

When we carried out a survey to find the sort of events that villagers wanted, the event that was most requested was a 'Farmers Market'. These types of events are not easy to arrange as the businesses have to be persuaded to come and the committee members give considerable amounts of time to open the hall, make refreshments, clear up, etc.

Recently fewer than ten villagers attended in the two hour period of the event, and correspondingly this means that it is not viable for the traders to come along.

The committee wonders why so many replied that they wanted a Farmers Market and yet did not support it when there was the opportunity to do so.

## June Waterson Counselling Psychotherapist.

*BSc (Hons) Psychology & Counselling  
Dip. Cognitive Behavioural Therapy (CBT).  
BABCP Reg'd.*

For help coping with Depression, Stress, Bullying, Low self-esteem, lack of confidence, OCD, Post Traumatic Stress disorder etc.

Tel: 01844281462 Mob: 07530596168

[e-mail: june-waterson@virginmedia.com](mailto:june-waterson@virginmedia.com)

**SERVICE CENTRE**

**RCP**

- M.O.T's £10 off
- TYRES/EXHAUSTS
- SERVICING

\*Loan Cars\*

\*Free Collection & Delivery Service\*

For Unbeatable Prices Call

**01844 278177**

[workshop@rcpservices.co.uk](mailto:workshop@rcpservices.co.uk)



Dave Pullen  
Handyman Services



**Dave Pullen  
General Handyman**

Tel: 01491 612809

Mobile: 07973 735164

**No job too small!**

### Watlington Gardening Club

Watlington Gardening Club meets on the first Wednesday of every month in Watlington Town Hall at 7.45pm. Talks can vary from practical tips to plant hunting in the wild. There are usually slides and we serve coffee and tea free at the end of the meeting. Why not come along and join us for the evening. Visitors and guests are always welcome for a small charge. Annual Membership £12

March 7, 2012, Chris Marchant, Orchard Dene Nurseries, will talk about 'The Power of Creative Planting'.

Please contact Cheryl Barnes, Chairman, Tel: 01491 614928 if you need further information.

### What financial help is available to sixth formers who are struggling to stay in education?

First of all, it is always worthwhile talking to a trusted teacher to find out how the school or college may be able to help.

Although financial help for school students through the education maintenance allowance (EMA) has now been scrapped, young people who were already getting EMA before January 2011 will continue to get it until the end of the 2011/12 academic year.

Anyone in their first year of post-16 study who was getting maximum EMA is eligible for £20 each week they are in education or training until the end of this academic year.

The EMA scheme has been replaced by a bursary scheme of £1200 a year for young people with disabilities, on income support, children in care and care leavers.

There is also a new fund for schools and colleges to use to support any student who may find themselves in financial difficulties. This is a discretionary fund and it is up to the educational establishment itself to decide who should be able to help.

### HARLESFORD BEEF AND LAMB

Butchery Next Open at Oxhouse Farm

#### FRIDAY 17th February

3.00 pm -7.00 pm

#### SATURDAY 18th February

9.00 am -12.00 pm

For more details call

01844 281514 07793962175

Or visit [www.harlesfordfarm.co.uk](http://www.harlesfordfarm.co.uk)

### QUALIFIED SURGICAL CHIROPODIST

SANDRA MILLER MSSChA

HOME VISITS BY APPOINTMENT

I am able to treat a wide variety of foot care including:-

General foot care neglect - callouses and corns - ingrowing toe nails  
Yellow, crumbly, thickened nails - bunions - flat foot  
Diabetic patients - verrucae (various treatments)  
And many more

Evening and weekend appointments available.

Tel: 01844 201709 Mobile 077 64945401

Registered member of the British Chiropody  
And Podiatry Association



## Devey Tree Care

### Tree Surgery & Garden Maintenance

#### Services

We offer a variety of services for your trees and gardens, from hedge cutting to tree removal.

Fully insured with £5M public liability cover  
All jobs considered and all quotations are free of charge.

#### Telephone:

Call Owain Devey NCH Arb on  
07922736451 01844281101

or

[owain.devey@hotmail.co.uk](mailto:owain.devey@hotmail.co.uk)

[www.deveytreecare.co.uk](http://www.deveytreecare.co.uk)



## Garden Services

Mowing

Edging

Weeding

Mulching

Grave Tending

Pruning

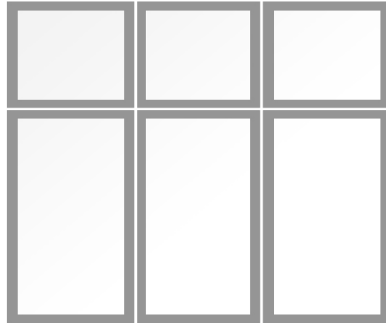
Renovation

Hedge Cutting

Design

Landscaping

  
Swan Gardens  
01844 281576



# SILENT VIEW WINDOWS

WINDOWS DOORS GLAZING  
CONSERVATORIES CLADDING

QUALITY PVCu, ALUMINIUM & TIMBER

All Windows & Doors come with high security  
locking systems & a Ten year guarantee

Also available

Repairs

Secondary Glazing

Traditional Glazing

Box sash (PVCu or Timber)

All areas covered

**Guaranteed to  
beat any  
written  
quotation**



**Call now for a free no obligation quotation**

MOB: 0772 428 3312

TEL: 01844 216387

EMAIL: [silentviewwindows@gmail.com](mailto:silentviewwindows@gmail.com)

Young people aged 16/17 **may** also be able to request a concessionary bus pass to pay half price fares through their school or college.

Some charities and trusts can help with equipment and costs to enable young people to continue their educational studies. Youth workers can help with applications.

For more information on young people and benefits, go to the Citizens Advice microsite [www.advice4me.org.uk](http://www.advice4me.org.uk) which contains information and advice just for young people about the problems that concern them the most.

Parents may also be entitled to help. They can get free, confidential information and advice on this from their local Citizens Advice Bureau – see [www.adviceguide.org.uk](http://www.adviceguide.org.uk) for contact details.

CAB adviceline 08 444 111 444 or 0300 3300 650(mobile)

Your local CAB is in Market Square, Thame

#### **Second round for sport facilities funding opportunities**

Sports clubs in the Vale of White Horse and South Oxfordshire looking to extend or modernize their facilities have another chance to apply for funding.

In total, £50 million of Inspired Facilities funding, provided by the Lottery Plus Partnership, is available until 2014, with money allocated equally over five rounds.

The first round of applications took place in August with Henley Tennis Club being awarded £50,000 towards a new pavilion and Cumnor Cricket Club receiving just under £32,000 to help pay for a new three-bay cricket net.

Applications for the second round of £10 million funding begins on Wednesday 1 February. There will be another round later in the year, with the final two in 2013/14, so there will be plenty of opportunities for clubs to apply.

Inspired Facilities is part of the Sport England's Places

People Play initiative, which aims to bring the inspiration and magic of the 2012 Olympic and Paralympic Games to the heart of local communities.

Up to a thousand grants are available throughout the country between £20,000 and £150,000. Those applying for funding are required to identify an appropriate amount of

  
**four  
seasons  
tree care**

**Tree Work Specialists**

Call Matthew Vaughan NC Arb.

**01844 218222**

**Mob: 07973 507876**

**Web: [www.4seasonstreecare.co.uk](http://www.4seasonstreecare.co.uk)**

**Email: [mail@4seasonstreecare.co.uk](mailto:mail@4seasonstreecare.co.uk)**

**1 Beech Road, Thame, Oxon. OX9 2AL**

- \* **Over 20 Years Experience**
- \* **£10 Million PL Insurance**
- \* **Merrist Wood College Trained**
- \* **Local Authority, Private Estate & Domestic Work**



## **Partying Pets**

**Children's Animal Encounter Parties**

**Booking Now for 2012**

**Affordable children's entertainment. Meet, Greet and Cuddle some friendly animals, play games and have fun. Packages to suit all budgets...**

**Fully Insured, CRB Checked and First Aid Trained.**

**Telephone Lucy on 07799 116663 for a chat.**

**[www.partyingpets.co.uk](http://www.partyingpets.co.uk)**

## **ElectricalSparks.com**

**Fully Qualified Domestic Electrician**

### **5 STAR CUSTOMER RATING**

*"Can't recommend him more highly"*

*"delivered on budget"*

*"excellent value for money"*

*"job done to a very high standard"*

*"cost was very reasonable indeed"*

*"felt very much in safe hands"*

*"no hesitation in using him again"*

**Fully insured & CRB checked**

**Free estimates & advice from local trusted professional tradesman who understands customers.**

**Steve Ireland**

**[info@electricalsparks.com](mailto:info@electricalsparks.com)**

**01865-527517**

## Coffee Shop

open at the Memorial Hall Tetsworth



Every Tuesday from  
2.00 pm until 4.30 pm



Everyone welcome

Your Local Upholstery Service

## MARGAN LTD

For All Your Upholstery Traditional &  
Modern Free Collection Service

[www.margan.co.uk](http://www.margan.co.uk)

Tel 01844-208655 7.00am to 5.00pm



## The Swan Restaurant & Antiques Centre

Open 7 days a week 10am - 6pm

**Lunches served every day**

**Brunches served**  
Monday – Saturday

**Morning Coffees**  
& **Afternoon Teas**

**Private Parties & Evening Events**

Please contact the team at The Swan  
to discuss your requirements

**The Swan at Tetsworth**  
High St, Tetsworth OX9 7AB

**Restaurant** 01844 281182

**Antiques** 01844 281777

[www.theswan.co.uk](http://www.theswan.co.uk)



money from other sources to support their application.

Applications for the funding can be submitted by any organisation entitled to receive public funding, including voluntary or community organisations, local authorities, sports clubs, playing field associations and educational establishments.

For further information, to apply for Inspired Facilities funding and for ideas of possible improvements that could be made to your club's facilities, go to [www.inspiredfacilities.sportengland.org](http://www.inspiredfacilities.sportengland.org)

Dear Father Christmas.

I don't know if all villagers know but every Christmas Eve Tetsworth has a visit from a very special person dressed from head to toe in bright red, with a hat & white beard. Father Christmas has been singling Tetsworth out amongst all the other villages, towns & cities in the world he has chosen us to visit us. Father Christmas comes between 5.30 & 8pm every Christmas Eve before he delivers presents to all the other children throughout the world. Of course he knows the names of every child, the fact that they have just moved house and what school they go to. He discusses the importance of going to bed on time and not playing on the play station all day long. He spends time chatting to them about what they would like for Christmas. Families from outside the village gather at friends homes in the village so that their children can also join in the fun. Parents cannot believe that when their children open the door to Father Christmas they just stand there with their mouths open, others cling to their parents legs, some cannot talk at all others chat away like he is a long lost friend.

This year was Father Christmas' 36th consecutive year visiting Tetsworth & all of us with children & who are children would like to give a really big thank you Father Christmas for coming and we look forward to many more years of visiting

**K AVERY & SON LIMITED**  
Plumbing & Heating Engineers  
Unit 1 The Barn, Weston Road, Lewknor, OX49 3RU  
Tel: 01844 354777  
Fax: 01844 354352  
E-mail: [info@kaveryandson.co.uk](mailto:info@kaveryandson.co.uk)

**We carry out all aspects of  
Plumbing and heating including:**

- Bathroom installations and refurbishments
- Boiler services, breakdowns & repairs
- Chemical Power Flushing
- Central heating maintenance & upgrades
- Radiator installation & thermostatic radiator valves
- Un-vented systems & hot water cylinder installations
- Under floor heating installations, servicing and repairs
- Solar/Re-newable Energy installations, servicing and repairs
- Oil, Natural Gas & LPG Installations
- Landlord Gas Safety Certificates
- New builds, extensions & refurbishments
- 24 Hour Callout Service
- And much much more...

**We hold certificates &  
qualifications in the following**

- GAS SAFE
- OFTEC
- Energy Efficiency
- Solar
- Under Floor Heating
- Chemical Power Flushing
- G3 Un-vented cylinders

**Special offers!**

- Combi boiler changes supplied & installed from £999 + VAT
- Up to 8 Thermostatic radiator valves supplied & installed from £239 + VAT
- 22mm Magnaclean Magnetic filter supplied & installed from £199 + VAT

PLEASE CALL OUR FRIENDLY OFFICE TEAM ON

**01844 354777**

TO DISCUSS YOUR PLUMBING & HEATING REQUIREMENTS





### 100 Club

The winner of the December draw was  
Mr D Mellor of High Street, Tetworth  
The winner of the January draw was  
Mr A Martin of Marsh End, Tetworth

## Quiz Night

Friday 30th March

7.30 for 8

Quiz Masters—Jane and William Bowers

£8.00 per person, max 8 per team

Light Supper Included

01844 281645

For Tetworth Village Hall

## Hall for Hire

Tetworth Memorial Hall is available for hire  
For parties, meetings, events and more

Mornings	£25.00
Afternoons	£25.00
Sun—Thurs evenings	£30.00
Friday evening	£50.00
Saturday evening	£60.00
Children's Parties	from £20.00

**Call Chris on 01844 281645**

**For details**



**Telephone 01844 281555**

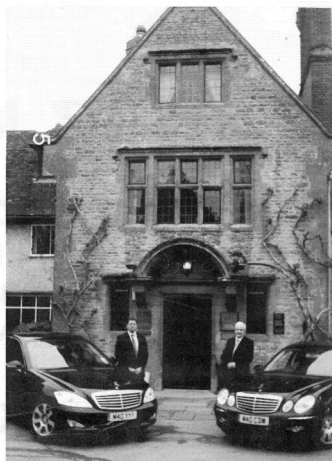
**Chauffeur driven airport  
and London transfers**

**Tours — Cotswolds,  
Warwick, London etc**

**Weddings — selection  
of car colours**

**All cars air-conditioned,  
E & S class Mercedes**

**8 seater available**



**Airports are our speciality and we are usually  
cheaper than traditional taxis**

## Shaun Guard TV AERIAL SERVICES

- **Poor Reception Solved** - For Analogue and Digital TV
- **TV and Radio Aerials** - Repair and Installation
- **Extra TV Points** - For Aerial and Sky
- **Sky TV** - Also Foreign Language Satellite

**Call Thame 01844 259119**

...now a part of  **OXFORD AERIALS**

## Property Maintenance

Kitchen and bathroom fitting  
Tiling, painting, decorating, fencing  
Guttering etc.  
Any job considered. Free estimates.

Call Dave Smith  
01844 281572 (Tel)  
07725 077111 (Mob)

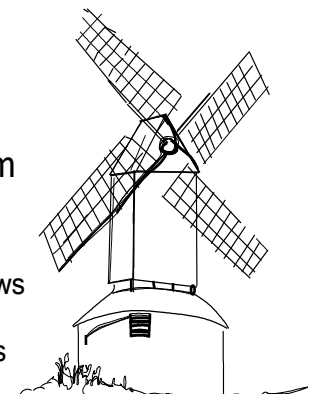


## Windmill Windows

Thame  
Bicester  
Oxford  
Aylesbury

PVCu, Aluminium  
& Hardwood

Replacement Windows  
Residential Doors  
French & Patio Doors  
Fascias & Soffits  
Glass & Sealed Units  
Conservatories



**01844 237070**

**FENSA**  
Registered

Fax: 01844 237737  
For fresh Ideas & Free Quote

## Dates for your Diary

### Tuesday

2.00 pm - 4.30 pm

### Sunday

7.30 - 10.30

### 2nd Monday of Month

7.30 pm

### Wednesday

7.00 pm—9.00 pm

### Thursday

11.30 am

### The Coffee Shop

Memorial Hall, Tetsworth

### Free Pool Table to Members'

Sports and Social Club, Tetsworth

### Parish Council Meeting

Tetsworth Memorial Hall

### Youth Tuck Shop

Tetsworth Memorial Hall

### Coffee Morning

Old Red Lion, Tetsworth

### Thursday 2nd February

10.45—11.10

### Monday 6th February

9.45 am—11.15 am

### Thursday 16th February

10.45—11.10

### Monday 20th February

9.45 am—11.15 am

### Thursday 1st March

10.45—11.10

### Friday 24th February

9.45 am—11.15 am

### Saturday 24th March

10.00 am onwards

### Friday 30th March

8.00 pm

### Mobile Library

Back street, Op. Memorial Hall

### Children's Mobile Library

The Green (off Marsh End)

### Mobile Library

Back street, Op. Memorial Hall

### Children's Mobile Library

The Green (off Marsh End)

### Mobile Library

Back street, Op. Memorial Hall

### TPSA Quiz Night

The Green (off Marsh End)

### Church and Church Yard

### Spring Clean

### Village Hall Quiz Night

Memorial Hall, Tetsworth

## Services at St Giles

5th Feb

Parish Communion

Rev. Peter Waterson

12th Feb

Morning Worship

Jeneva Paul

19th Feb

All Age Worship

Heather Moore

26th Feb

Family Communion

Rev. Peter Waterson

4th Mar

Parish Communion

Rev. Peter Waterson

11th Mar

Morning Worship

Jeneva Paul

18th Mar

All Age Worship

Heather Moore

25th Mar

Family Communion

Rev. Peter Waterson

## Planning Decisions from SODC

### 1st January—26th January

P11/E1938

#### Oxfordshire Golf Club House Rycote Lane Milton Common OX9 2PU

Alterations to west elevation to provide entrance doors and display window with canopy over to relocated pro-shop.

Granted

P11/E1815

#### Land adjacent to 28 Back Street Tetsworth OX9 7AN

Erection of two bed house with parking, access and conservatory.

Granted

P11/E1899

#### 94 High Street Tetsworth OX9 7AE

Demolish existing single garage and replace with a double garage

Planning information is taken from the SODC web site [www.southoxon.gov.uk](http://www.southoxon.gov.uk)

## Planning Applications at SODC

### 1st January—26th January

P11/E2086

#### Cattle Market Site North Street Thame

Demolition of existing buildings and construction of new supermarket (Class A1) with ATM and substation and community centre (Class D2), associated access, car park and landscape works.

Planning information is taken from the SODC web site [www.southoxon.gov.uk](http://www.southoxon.gov.uk)

## Children's Parties

Tetsworth Memorial Hall  
available to hire for your child's  
party  
from just £20

01844 281645

## Hall for Hire

Tetsworth Memorial Hall is available for hire

Mornings £25.00

Afternoons £25.00

Sun—Thurs evenings £30.00

Friday evening £50.00

Saturday evening £60.00

**Call Chris on 01844 281645**

## Advertisers

We distribute copies of the Newsletter to all households within the village, additional copies are available from The Swan Antique Centre and Postcombe Service Station.

Send details of your advert to

3 Cygnet Close, Tetsworth, Thame, Oxon OX9 7BW or by e mail to [Tetsworthnews@aol.com](mailto:Tetsworthnews@aol.com)

### Rates per issue

Eighth of a page £5.50

Quarter page £11

Half page £22

Full page £44

**Leaflets** just £8.00

## Deadline for the each issue is 21st of the month

Send you letters, articles, news or advert to 3 Cygnet Close, Tetsworth, Thame, Oxon OX9 7BW

Or e mail [tetsworthnews@aol.com](mailto:tetsworthnews@aol.com)

Cheques made payable to Tetsworth Newsletter.

The Editor reserves the right to amend letters and articles at his/her discretion. Letters and articles are not guaranteed to be published.

The views of letters and articles are not necessarily the views of the Editor.

No responsibility can be taken for errors and inaccuracies.